



June 2025

COMMUNITY NEWS



School Crossing Patrol vacancies

Are you looking for paid work
supporting your community?

Essex County Council is recruiting School Crossing
Patrol Officers for this school.

Hourly rate £11.81, part time/term time only.

For more information and to apply,
please visit www.workingforessex.com

Mid Essex Secondary Schools

Open Evenings for Years 7 and 12 and Tours for 2026-2027 intake

The Boswells School

Tel: 01245 264451 www.boswells-school.com



The Boswells School - Year 7 Entry Open Evening

Date: Wednesday 1 October 2025
Timing: 5.30 pm to 8.00 pm
Headteacher's presentations: 5.30 pm and 6.30 pm

The Boswells School - Year 7 Entry Open Morning Tours

Dates: 22, 23, 24, 25 and 26 September 2025
Timing: 9.15 am to 10.30 am. Booking required.
Arrive at Reception 9.10 am

The Boswells School - Sixth Form Open Evening

Date: Wednesday 5 November 2025
Timing: 6.00 pm to 8.00 pm. Booking required.
Headteacher's presentation: 6.00 pm and 6.45 pm
Sixth Form Open Morning tour: Wednesday 12 November 2025 at 9.15 am

Chelmsford County High School

Tel: 01245 352592 www.cchs.co.uk



Chelmsford County High School - Year 7 Entry Open Evening

Date: Thursday 1 May 2025
Timing: 4.00 pm to 7.00 pm
Headteacher's presentations: 4.45 pm, 5.30 pm and 6.15 pm

Chelmsford County High School - Year 12 Open Evening

Date: Thursday 2 October 2025
Timing: 5.00 pm to 8.00 pm
Headteacher and Head of Sixth Form presentations: 6.00 pm and 7.00 pm

Hylands School

Tel: 01245 266766 www.hylands-tkat.org



Hylands School - Year 7 Entry Open Evening

Date: Wednesday 17 September 2025
Timing: 4.30 pm to 7.00 pm
Headteacher's presentations: 5.00 pm and 6.00 pm

Hylands School - Year 7 Entry Open Morning Tours

Date: Monday 22 to Friday 26 September 2025 at 9.00 am. Please contact Reception to book.

Hylands School - Year 12 Open Evening

Date: Thursday 13 November 2025
Timing: 5.00 pm to 7.00 pm
Headteacher and Head of Sixth Form presentations: 5.15 pm

The Beaulieu Park School

Tel: 01245 943400 www.beaulieuparkschool.com



The Beaulieu Park School - Year 7 Entry Open Evening

Date: Thursday 2 October 2025
Timing: 6.00 pm to 8.00 pm
Headteacher's presentations: 6.15 pm and 7.00 pm

The Beaulieu Park School - Year 7 Entry Open Morning Tours

Date: Various dates in September and October. Please visit our website to book.

The Beaulieu Park School - Year 12 Open Evening

Date: Wednesday 29 October 2025
Timing: 6.00 pm to 8.00 pm. Please visit our website to book.

Head of School and Head of Sixth Form presentations: 6.15 pm and 7.00 pm

Chelmer Valley High School

Tel: 01245 440232 www.chelmervallehighschool.co.uk



Chelmer Valley High School - Year 7 Entry Open Evening

Date: Thursday 18 September 2025
Timing: 5.30 pm to 8.00 pm
Headteacher's presentations: 5.45 pm and 6.45 pm

Chelmer Valley High School - Year 7 Entry Open Morning Tours

Dates: 22, 23, 24, 25 and 26 September 2025
Timing: 9.00 am and 10.00 am. Booking required.
Arrive at Reception 8.55am and 9.55 am

Chelmer Valley High School - Year 12 Open Evening

Date: Thursday 16 October 2025
Timing: 5.30 pm to 7.30 pm
Headteacher and Head of Sixth Form presentations: 5.45 pm

Great Baddow High School

Tel: 01245 265821 www.gbhs.co.uk



Great Baddow High School - Year 7 Entry Open Evening

Date: Tuesday 23 September 2025
Timing: 5.30 pm to 8.30 pm
Headteacher's presentations: 5.45 pm, 6.30 pm and 7.15 pm

Great Baddow High School - Year 7 Entry Open Morning Tours

Tour times by appointment throughout September and October 2025. Please contact the school office to book an appointment.

Great Baddow High School - Year 7 Sport Selection Day

Saturday 4 October 2025 (Application deadline midday on Friday 26 September 2025). Application via the school website: www.gbhs.co.uk

Great Baddow High School - Year 12 Open Evening

Date: Wednesday 22 October 2025
Timing: 5.30 pm to 8.00 pm
Headteacher and Head of Sixth Form presentations: 5.30 pm (external applications only) and 6.15 pm (internal students)

King Edward VI Grammar School

Tel: 01245 353510 www.kegs.org.uk



King Edward VI Grammar School - Year 7 Entry Open Days

Tours in Spring and Summer 2026 for Year 5 students will be advertised on our website.

King Edward VI Grammar School - Year 12 Open Evening

Date: Wednesday 12 November 2025
Timing: 5.00 pm to 8.00 pm
Headteacher & Head of Sixth Form presentations will take place at various times during the evening.

King Edward VI Grammar School - Year 12 Open Afternoon

Date: Wednesday 14 January 2026
Timing: 4.00 pm to 6.00 pm
This event is for those unable to attend our Year 12 Open Evening on Wednesday 12 November 2025.

Mid Essex Secondary Schools

Open Evenings for Years 7 and 12 and Tours for 2026-2027 intake *continued...*

Moulsham High School

Tel: 01245 260101 www.moulshamhigh.org



Moulsham High School - Year 7 Entry Open Evening

Date: Thursday 18 September 2025
Timing: 5.45 pm to 8.00 pm
Headteacher's presentations: 6.00 pm and 7.15 pm
Music aptitude presentation: 6.15 pm

Moulsham High School - Year 7 Entry Open Morning Tours

Date: 23, 24, 25 and 30 September 2025 and 1, 2, 6 and 10 October 2025
Timing: 9.00 am and 10.00 am on all days

Moulsham High School - Year 12 Open Evening

Date: Thursday 13 November 2025
Timing: 6.00 pm to 8.00 pm
Headteacher and Head of Sixth Form presentations: 6.00 pm and 7.15 pm

Ormiston Rivers Academy

Tel: 01621 782377
www.ormistonriversacademy.co.uk



Ormiston Rivers Academy - Year 7 Entry Open Evening

Date: Thursday 25 September 2025
Timing: 5.00 pm to 8.00 pm
Headteacher's presentations: 6.00 pm and 7.00 pm

Ormiston Rivers Academy - Year 7 Entry Open Morning Tours

Date: Monday 29 September until Friday 10 October 2025
Timing: 9.30 am

Ormiston Rivers Academy - Year 12 Open Evening

Date: Tuesday 30 September 2025
Timing: 6.00 pm to 8.00 pm
Headteacher and Head of Sixth Form presentations: 7.00 pm

Plume Maldon's Community Academy

Tel: 01621 854681 www.plume.essex.sch.uk



Plume Academy - Year 7 Entry Open Evening

Date: Thursday 18 September 2025
Timing: 6.00 pm to 8.00 pm
Headteacher's presentations: 6.00 pm and 7.00 pm

Plume Academy - Year 7 Entry Open Morning Tours

Date: Monday 29 September to Friday 3 October 2025. Please refer to the Plume Academy website to book your tour, available to book from 8 September 2025.

Plume Academy - Year 12 Open Evening

Date: Thursday 9 October 2025
Timing: 6.00 pm to 8.00 pm
Headteacher and Head of College presentations: 6.00 pm

The Sandon School

Tel: 01245 473611
www.sandon.essex.sch.uk



The Sandon School - Year 7 Entry Open Evening

Date: Thursday 2 October 2025
Timing: 5.30 pm to 8.00 pm
Headteacher's presentations: 5.45 pm and 6.45 pm

The Sandon School - Year 7 Entry Open Morning Tours

Various dates in September and October - please contact our reception team to book.

The Sandon School - Year 12 Open Evening

Date: Thursday 23 October 2025
Timing: 5.30 pm to 7.30 pm
Headteacher and Head of Sixth Form presentations: 5.45 pm

St John Payne Catholic School

Tel: 01245 256030 www.sjp.essex.sch.uk



St John Payne Catholic School - Year 7 Entry Open Evening

Date: Thursday 25 September 2025
Timing: 5.30 pm to 8.00 pm
Headteacher's presentations: 5.45 pm, 6.45 pm and 7.45 pm

St John Payne Catholic School - Year 7 Entry Open Morning Tours

Please contact the school to arrange a visit. We look forward to meeting you.

St John Payne Catholic School - Year 12 Entry Open Evening

Date: Wednesday 15 October 2025
Timing: 6.00 pm to 8.30 pm
Headteacher and Head of Sixth Form presentations: 6.00 pm and 7.45 pm

William de Ferrers School

Tel: 01245 326326 www.wdf.school



William de Ferrers School - Year 7 Entry Open Evening

Date: Thursday 18 September 2025
Timing: 6.00 pm to 8.00 pm
Executive Headteacher and Head of School's presentations: 6.20 pm and 7.00 pm

William de Ferrers School - Year 7 Entry Open Morning Tours

Various dates in September and October, please contact our reception team to book.

William de Ferrers School - Year 12 Open Evening

Date: Thursday 6 November 2025
Timing: 6.00 pm to 8.00 pm
Head of School and Head of Sixth Form's presentations: 6.20 pm

Parents and carers can apply for their child's school place online using the Essex Online Admissions Service at: www.essex.gov.uk/admissions. Alternatively an application form can be found on their website or you can request a form by calling 0345 603 2200 or use the one at the end of The Secondary Education in Essex 2024/2025 Booklet (if you would prefer to apply on paper). **Please do not do both.**

You will be able to make your application online from **12 September 2025**.

The closing date for secondary applications is **31 October 2025**. This is the statutory national closing date set by the Government.



Colchester Royal Grammar School

Compassion - Respect - Generosity - Support

11+ Open Evening

Tuesday 24th June

6.30pm - 9pm

Day school for boys ages 11-18 years
with a co-ed Sixth Form and Boarding

THE
GOOD
SCHOOLS
GUIDE

Limited parking at rear of school

No booking required

THE SUNDAY TIMES
SCHOOLS
GUIDE
2021

EAST ANGLIA
STATE
SECONDARY
SCHOOL
OF THE DECADE

6 Lexden Road, Colchester, CO3 3ND crgs.co.uk 01206 509 100

GET SET FOR ULTIMATE HOLIDAY FUN!

**INTRO
OFFER
NOW ON!**

Ends 3rd June



Outstanding activity day camps for 4 to 14 year olds from
8am to 6pm during the Summer holidays

NEW HALL SCHOOL, CHELMSFORD

book now at ultimateactivity.co.uk

OFSTED REGISTERED

FLEXIBLE BOOKINGS

New Hall School Camp Promo

MON - FRI | 8AM - 6PM

More information on the following page...

CAMP DATES



SUMMER: MON 21 JULY - FRI 22 AUGUST

Over 40 exciting activities delivered every week across four age groups, giving each child THE Ultimate holiday experience.

SWIMMING

TENNIS

BASKETBALL

ZORBING 8+

ULTIMATE ART

DANISH

LOGBALL

PEDAL KARTS 6+

FENCING 8+

MINI

OLYMPICS

ROLLER RACERS

DODGEBALL

KWIK CRICKET

ULTIMATE

FRISBEE

ESCAPE &

EVASION

KURLING

NETBALL

STORY

ADVENTURE

ROUNDERS

SCATTERBALL

FOOTBALL

TRI-GOLF 6+

TEE BALL

TAG RUGBY

CAPTURE THE
FLAG

TEAM &
INITIATIVE
GAMES

BOCCIA

...AND MUCH
MORE*

- + Pay by childcare vouchers
- + Move dates for free up to 14 days in advance
- + Book by the day or week
- + Monday to Friday
- + Drop off from 8.30am & pick up until 5.15pm
- + Extended hours available 8am to 6pm
- + Ofsted Registered



New Hall School

New Hall School is set within acres of wonderful grounds and offers outstanding facilities including a swimming pool, adventure playground, astro pitches and sports hall - perfect for children to enjoy ultimate holiday activities!

Address: The Avenue, Boreham, Chelmsford CM3 3HS

INTRO OFFER

£225

PER WEEK

SAVE £50

STANDARD
PRICE £275

£53

A DAY

SAVE £7

STANDARD
PRICE £60

Offer ends
Tuesday 3rd June 2025

BOOK NOW on ultimateactivity.co.uk or call **0330 111 7077**

*Activities vary per location – see online. If you have received this flyer from your child's school, this does not mean the school endorses Ultimate Activity Camps.

Story Garden

Adventures in Nature and the Great Outdoors



summerreadingchallenge.org.uk

Saturday 19 July to Saturday 6 September

**At your local Essex library or mobile library -
see libraries.essex.gov.uk for library opening times**

WE ACCEPT CHILDCARE
VOUCHERS & OFFER
TAX-FREE CHILDCARE!

MEGA CAMPS

KIDS DAY ACTIVITY CAMPS

CHILDCARE FROM
8am - 6pm

AGES
4 - 14

SUMMER CAMPS 2025

23RD JULY - 29TH AUGUST*

*CHECK WEBSITE FOR EARLY BIRD OFFERS AND MORE INFORMATION
SUMMER PAYMENT PLANS AVAILABLE



DIFFERENT MEGA ACTIVITIES EACH DAY AS WELL AS FOOTBALL, DODGEBALL, ROUNDELS, KWIK CRICKET,
BASKETBALL, TEAM GAMES, ARTS & CRAFTS AND MUCH, MUCH MORE...

MULTIPLE LOCATIONS THROUGHOUT
ESSEX, KENT & SURREY

Ofsted
Registered

BOOK ONLINE NOW!
WWW.MEGACAMPS.NET
OR CALL 0333 012 4378

ALL OUR
STAFF ARE



**ACL****FREE!**

SUPPORTING A SUCCESSFUL SECONDARY TRANSITIONS (Year 6)

Preparing for the transition to secondary school can be both exciting and challenging for families and children in Yr 6. Our 2-hour sessions are designed to help families navigate this important milestone with confidence and ease. By the end of this session, families will be equipped with the tools and knowledge to ensure a smooth and successful transition to secondary school.

16/06/2025**1900 - 2100****Online**

or

03/07/2025**1900 - 2100****Online**

Sign up today and make a positive impact on your child's life!

Visit our website **aclessex.com** and type '**successful secondary**' in to the 'Find a course...' box

**COMMUNITY &
FAMILY LEARNING**



Essex County Council



ACL

EMPOWER YOUR CHILD TO MANAGE THEIR EMOTIONS

Are you a parent or carer looking to better support your child's emotional well-being? Join our sessions designed to help you understand and nurture your child's emotions.

FREE Online sessions available this May:
Managing Big Emotions, Managing Anger, Self Esteem For Teens,
Understanding Children's Anxiety, Understanding Teen Stress, Zones of Regulations.

Take the First Step Today by Signing Up!
Visit **aclessex.com** and type '**emotions**' in the search courses box

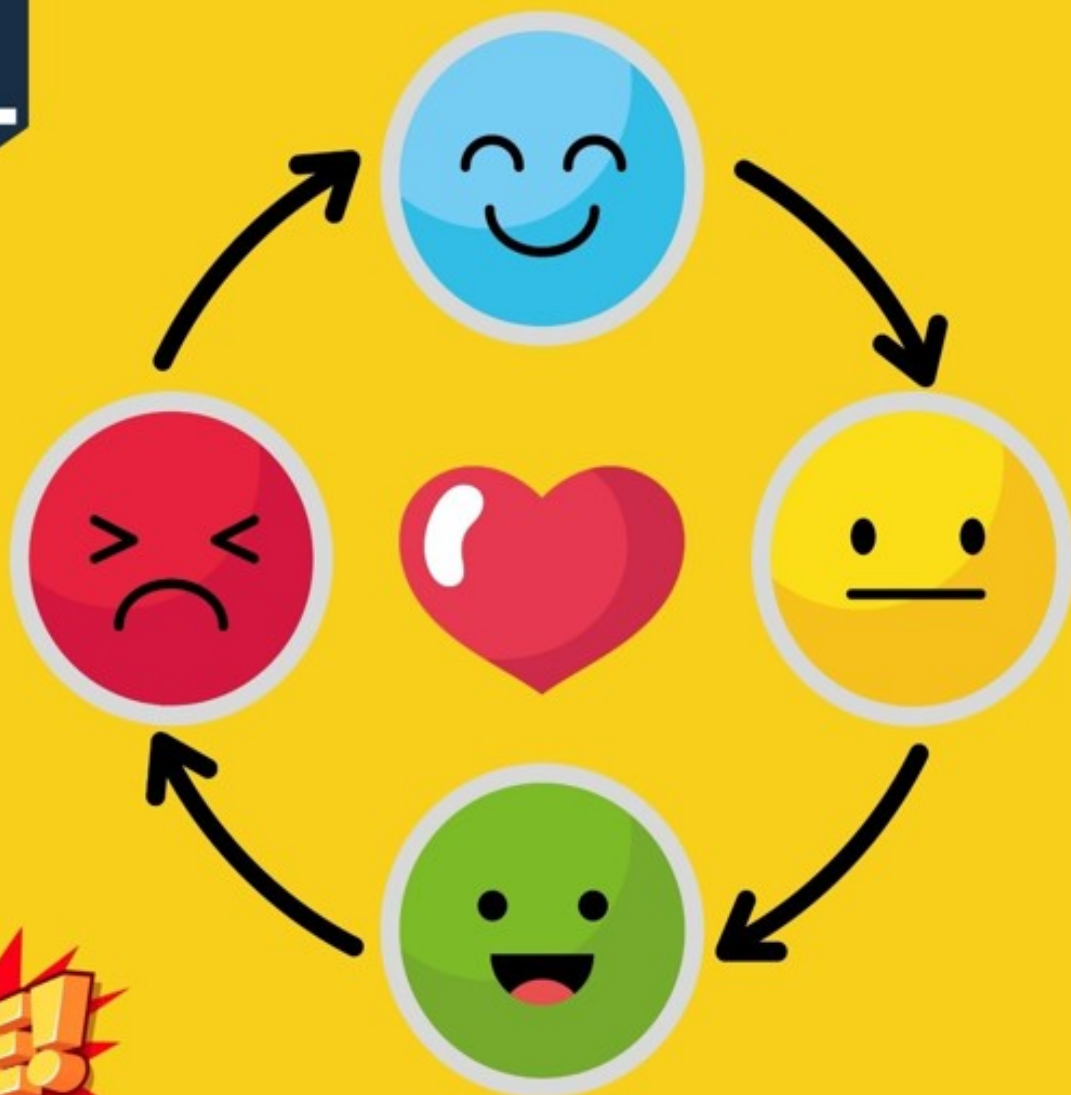
FREE

COMMUNITY &
FAMILY LEARNING



Essex County Council

ACL



☀️ Help Your Child Master Their Emotions ☀️

Help your child understand and manage their emotions!

Join us for a friendly, practical FREE online sessions introducing the Zones of Regulation. A simple, effective approach to support emotional wellbeing at home and school.

Various online sessions available at different times of the day to suit you!

For Further Information, and to Sign Up ...

Visit our website [aclessex.com](https://www.aclessex.com) and type 'Zones'
in to the 'Find a course...' box

COMMUNITY &
FAMILY LEARNING



Essex County Council



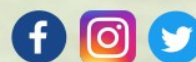
JOIN OUR TEAM EVERY SCHOOL HOLIDAY FOR OUR **ACTIVE CAMPS!**

OFFERING YOUR CHILD A SAFE SPACE TO LEARN, SOCIALISE, STAY ACTIVE, FORM FRIENDSHIPS, DEVELOP INTERESTS AND BUILD CONFIDENCE.

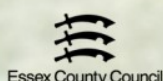
Come and join our team every school holiday for lots of fun, sports and much more! PLUS exciting new activities & theme days we can't wait to share with you.

Book now visiting www.cmxsc.co.uk

@cmxscactive



Funded by



Everything you need to know!



**Venue – Mildmay Primary School, Robin Way,
Chelmsford CM2 8AU**



**Time 9.00am – 3.30pm
Early Drop Off 8.30am – Late Pick Up 4.30pm**



Age – For all primary school aged children from Year R – Year 6



**Activities – Nerf Fun, Laser Tag, Football, Basketball, Tag Rugby,
Gymnastics, Cricket PLUS much more**



**Price – Normal Day £29.50
Early Drop Off £3 – Late Pick Up £6**

WE ACCEPT CHILDCARE
VOUCHERS & OFFER
TAX-FREE CHILDCARE!

MEGA CAMPS

KIDS DAY ACTIVITY CAMPS

CHILDCARE FROM
8am - 6pm

AGES
4 - 14

MAY HALF-TERM & SUMMER CAMPS 2025

CHECK WEBSITE FOR EARLY BIRD OFFERS AND MORE INFORMATION
SUMMER PAYMENT PLANS AVAILABLE



DIFFERENT MEGA ACTIVITIES EACH DAY AS WELL AS FOOTBALL, DODGEBALL, ROUNDERS, KWIK CRICKET,
BASKETBALL, TEAM GAMES, ARTS & CRAFTS AND MUCH, MUCH MORE...

MULTIPLE LOCATIONS THROUGHOUT
ESSEX, KENT & SURREY

Ofsted
Registered

BOOK ONLINE NOW!
WWW.MEGACAMPS.NET
OR CALL 0333 012 4378

ALL OUR
STAFF ARE





COMMUNITY FOUNDATION

CLICK
HERE TO
BOOK



Premier League Disability Football Festival

INCLUSIVE U'S FOOTBALL CAMP

WHO? Young people aged 5-16 with
Special Educational Needs and Disabilities

WHEN? Friday 11th April, 10am-2pm

WHERE? Shrub End Community and Sports Centre, CO2 9BG

COST? £15

WHAT TO EXPECT?

- » **Expert Coaching:** sessions will be led by our FA qualified coaches, who are experienced in working with SEND players.
- » **Skills Development:** enhance your skills through fun football drills, including passing, dribbling, shooting and much more.
- » **Special Guests:** meet Colchester United players and club mascot Eddie the Eagle!
- » **Exciting Rewards:** every participant will receive a Colchester United themed prize, with additional medals and trophies available to be won.

**TO INSPIRE, ENRICH
AND UNITE OUR COMMUNITIES**

Registered Charity Number: 1159381

www.cu-fc.com/cucf
cucf@colchesterunited.net
01206 755160

@CoIU_CF /ColUCF
#enrichourcommunities

Child and Family Counselling Services

Parents are now able to access direct support for their child by referring them into the safe hands of our Child and Family Counselling Services (CFCFS). We have a team of highly experienced Counsellors, Specialist Child and Adolescent Counsellors and Play Therapists available within the counselling team who work in our specially adapted therapy rooms.



We offer support to children, young people and parents through talking, play and art therapy.

CFCFS provides therapy to children, young people and families. We support many different issues such as:

- Self-harm
- Identity
- Anxiety
- Bullying
- Bereavement
- Parental separation and family issues or conflict.

The pathway is overseen by our Head of Child and Family Counselling Services, who is supported by a team that are both passionate about and dedicated to the wellbeing of children and young people. The team has achieved very positive and reparative outcomes for children and families.

What can you expect?

After an initial contact, we will arrange an assessment to explore the issues your child may be experiencing and will then identify which model best supports the difficulty your child may be facing.

Who do you contact?

If you are worried about your child and would like to talk to us further, please either email Catherine cmunns@bccs.org.uk or call on 07792 732206 and we will be pleased to help.

Take a moment to read about the experience a parent shared with us:

I had contacted a number of professional services to assist me in helping my daughter. At the suggestion of my daughter's school a referral was made to BCCS and it was then that I met one of their counsellors. After months of unanswered questions and "hitting brick walls" I finally had answers, structure and a profound understanding of how a small little girl's mind works.

For me, there has been nothing so worrying as watching your child struggle and the BCCS counsellor's help has enabled me to help her for which I will be forever grateful.



www.bccs.org.uk



headoffice@bccs.org.uk

BCCS, 133 High Street, Billericay, Essex, CM12 9AB
Brentwood Catholic Children's Society - Registered Charity Number: 1000661



BCCS
a children's charity for
Essex and East London